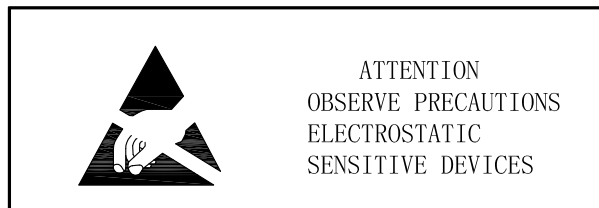


SPECIFICATION FOR APPROVAL

CUSTOMER : oomlout
ARTICLE : 5mm Standard Round Red LED
PART NO : FLR-50T03-SR10
DATE : 2009-08-26
CUSTOMER MODEL :

RoHS PRODUCT

Authorized Signature



 Absolute Maximum Rating

Item	Symbol	Absolute Maximum Rating	Unit
Forward Current	IF	20	mA
Peak Forward Current	IFP	80	mA
Reverse Voltage	VR	5	V
Power Dissipation	PD	60	mW
Operation Temperature	Topr	-35~+80	℃
Storage Temperature	Tstg	-40~+80	℃
Lead Soldering Temperature	Tsol	Max.260° for 3sec Max.	

*IFP Conditions:Pulse Width≤10msec duty≤1/10

*Tsol Conditions:4mm from the base of the epoxy bulb

 Typical Optical/Electrical Characteristics

Item	Symbol	Condition	Min.	Typ.	Max.	Unit
Forward Voltage	VF	IF=20mA	--	2.0	2.5	V
Reverse Current	IF	VR=5V	--	--	10	uA
50% Power Angle	$2\theta_{1/2}$	IF=20mA	--	13	--	deg
Luminous Intensity	IV	IF=20mA	16000	25000	--	mcd
Peak Wavelength	λ_p	IF=20mA	620	623	625	nm
Recommend Forward Current	IF(rec)	--	--	10~20	--	mA

Notes:

1. Absolute maximum ratings Ta=25° C .
2. Tolerance of measurement of forward voltage±0.1V.
3. Tolerance of measurement of peak Wavelength±2.0nm.
4. Tolerance of measurement of luminous intensity±15%.

Add:Rd. HuaChang Nan. Tongfuyu Zone. Dalang. Longhua. Baoan District. Shenzhen. China.

Http://www.furuier.en.alibaba.com E-mail:ledexport@furuier.com Rev:A0 Page:2 of 5

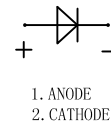
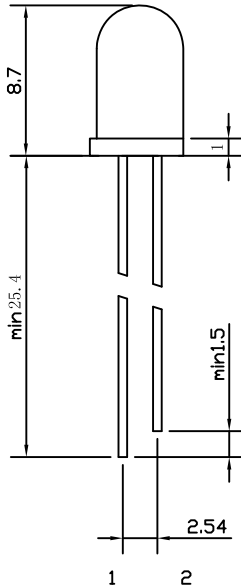
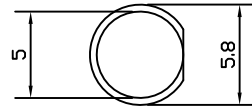
Tel:86-755-61563456

Fax:86-755-61568736

Designed By:



□ Package Dimensions And Materials



1. ANODE
2. CATHODE

□ 0.5 SQUARE*2

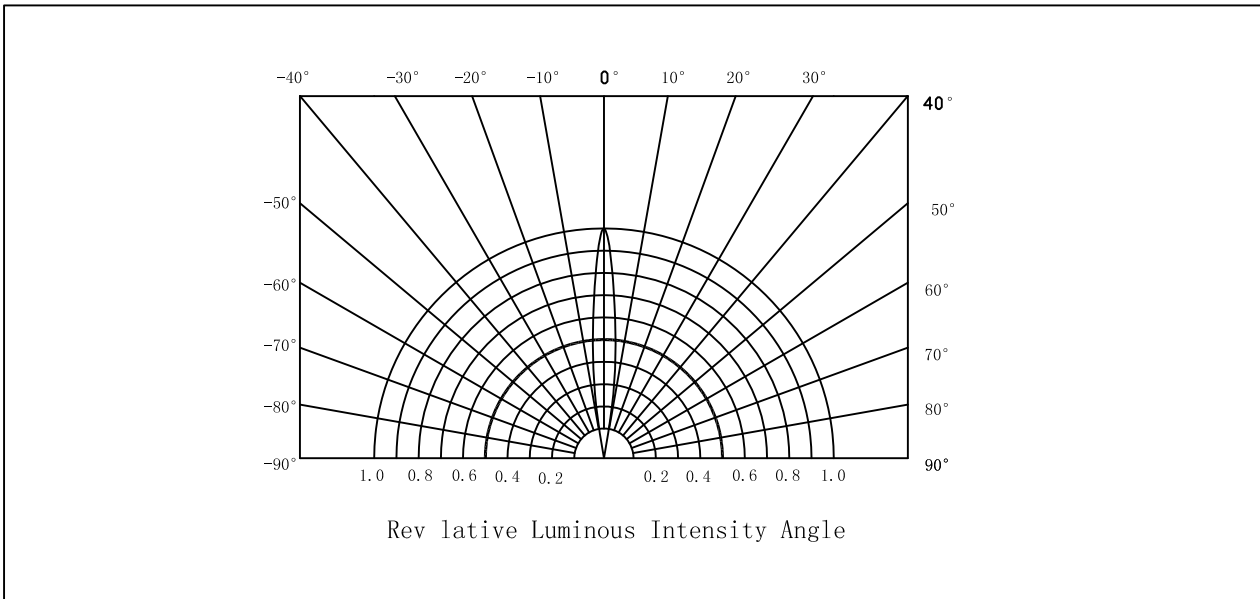
Chip		Lens Color
Dice Material	Emitting Color	
AlGaInP	Red	WATER CLEAR

Notes:

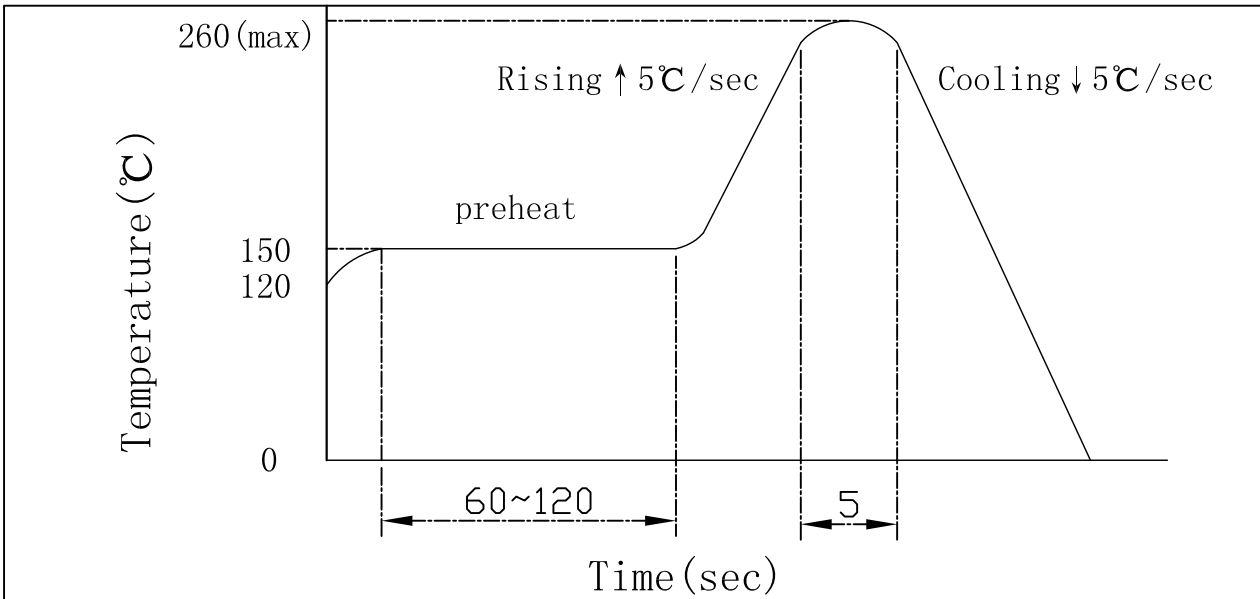
1. All dimension units are millimeters
2. All dimension tolerance is $\pm 0.2\text{mm}$ unless otherwise noted
3. An epoxy meniscus may extend about 1.5mm down the leads
4. Burr around bottom of epoxy may be 0.5mm max



Spatial Distribution



Reflow Temp/Time



∅Soldering iron

Basic spec is $\leq 5\text{sec}$ when 260°C . If temperature is higher, time should be shorter (+ 10°C -1sec) Power dissipation of iron should be smaller than 15W, and temperatures should be controllable. surface temperature of the device should be under 230°C