

SPECIFICATION FOR APPROVAL

CUSTOMER : oomlout

ARTICLE : ϕ 5 Round Water clear Blue LED

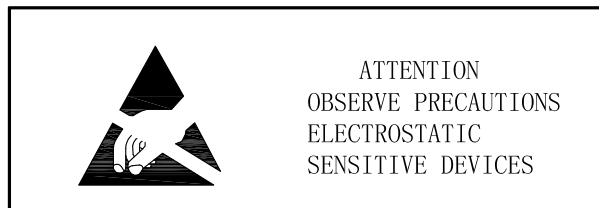
PART NO : FLR-50T04-SB4

DATE : 2009-08-26

CUSTOMER MODEL:

RoHS PRODUCT

Authorized Signature



 Absolute Maximum Rating

Item	Symbol	Absolute Maximum Rating	Unit
Forward Current	IF	20	mA
Peak Forward Current	IFP	120	mA
Reverse Voltage	VR	5	V
Power Dissipation	PD	80	mW
Operation Temperature	Topr	-35~+80	℃
Storage Temperature	Tstg	-40~+80	℃
Lead Soldering Temperature	Tsol	Max.260° for 3sec Max.	

*IFP Conditions:Pulse Width \leq 10msec duty \leq 1/10

*Tsol Conditions:4mm from the base of the epoxy bulb

 Typical Optical/Electrical Characteristics

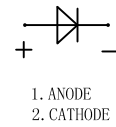
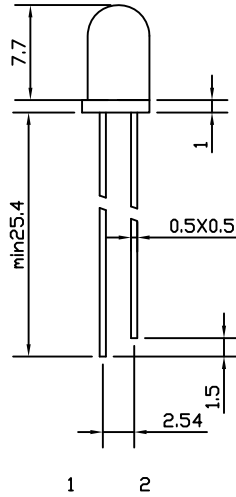
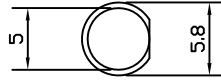
Item	Symbol	Condition	Min.	Typ.	Max.	Unit
Forward Voltage	VF	IF=20mA	--	3.0	3.6	V
Reverse Current	IF	VR=5V	--	--	10	uA
50% Power Angle	$2\theta_{1/2}$	IF=20mA	--	13	--	deg
Luminous Intensity	IV	IF=20mA	6000	8000	--	mcd
Peak Wavelength	λ_p	IF=20mA	465	467	470	--
Recommend Forward Current	IF(rec)	--	--	10~20	--	mA

Notes:

1. Absolute maximum ratings Ta=25° C .
2. Tolerance of measurement of forward voltage \pm 0.1V.
3. Tolerance of measurement of peak Wavelength \pm 2.0nm.
4. Tolerance of measurement of luminous intensity \pm 15%.



Package Dimensions And Materials



1. ANODE
2. CATHODE

0.5 SQUARE*2

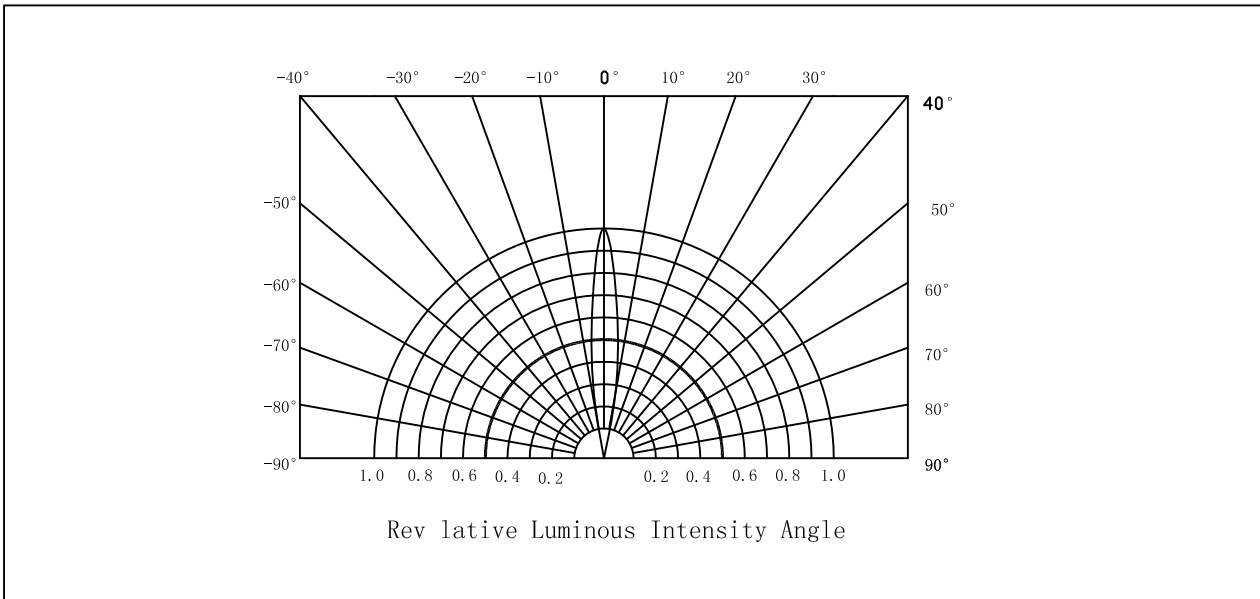
Chip		Lens Color
Dice Material	Emitting Color	
InGaN	BLUE	WATER CLEAR

Notes:

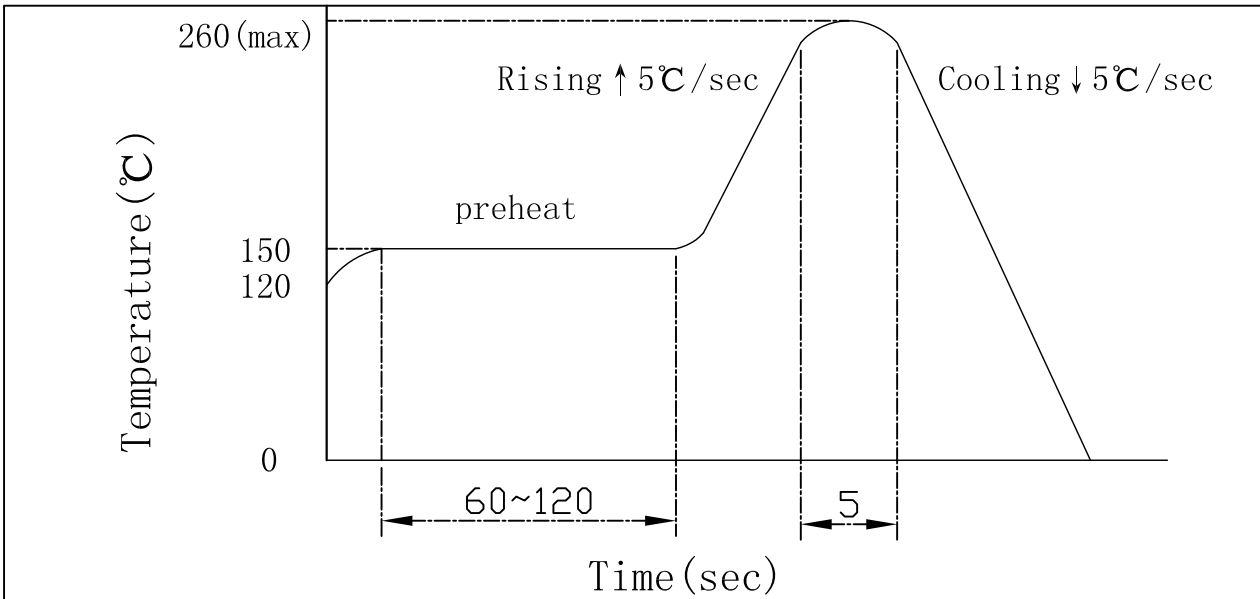
1. All dimension units are millimeters
2. All dimension tolerance is $\pm 0.2\text{mm}$ unless otherwise noted
3. An epoxy meniscus may extend about 1.5mm down the leads
4. Burr around bottom of epoxy may be 0.5mm max



Spatial Distribution



Reflow Temp/Time



Soldering iron

Basic spec is ≤ 5 sec when 260°C. If temperature is higher, time should be shorter (+10°C-1sec) Power dissipation of iron should be smaller than 15W, and temperatures should be controllable. surface temperature of the device should be under 230°C